

# Sultan<sup>®</sup>

miticide

## Introducing Sultan Miticide.

An innovative new miticide that's hard on spider mites and soft on beneficials. Sultan delivers a unique mode of action for rotation and integrated pest management programs:

- *Contact efficacy against all life stages of Tetranychid mites: eggs, immatures and adults*
- *Rapid, targeted knock-down and long residual activity*
- *Compatible with beneficial release programs*
- *Excellent plant safety with no observed phytotoxicity*

### Partial list of mites controlled:\*

Common name	Scientific name
Spruce spider mite	<i>Oligonychus ununguis</i>
McDaniel spider mite	<i>Tetranychus mcdanieli</i>
Pacific spider mite	<i>Tetranychus pacificus</i>
Twospotted spider mite	<i>Tetranychus urticae</i>
Strawberry spider mite	<i>Tetranychus turkestanii</i>
Willamette spider mite	<i>Eotetranychus willamettei</i>
Yuma spider mite	<i>Eotetranychus yumensis</i>
European red mite	<i>Panonychus ulmi</i>

\*See product label for complete list

## Key Benefits to Growers:

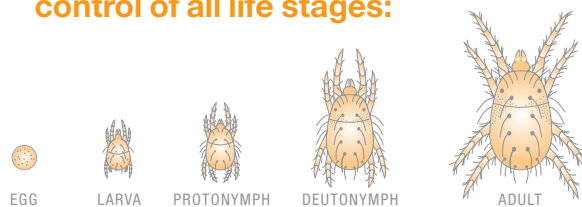
**Stops the Damage Now.** As a fast-acting contact miticide, Sultan gives growers the stopping power to gain immediate control of the infestation.

**Confident Crop Protection.** Active on all life stages, Sultan's long residual activity ensures effective control across the full spectrum of the mite population.

**More Effective Rotation.** With its unique MOA, Sultan is the new miticide rotation option to optimize integrated pest management programs.

**Sustains Beneficials in IPM Programs.** Because Sultan has not shown any adverse effects on beneficial insects or predaceous mites, it helps growers build and sustain the effectiveness of their IPM programs.

## Delivers rapid and effective control of all life stages:



## Label Restrictions:

Do not make sequential applications of Sultan miticide on intervals shorter than 14 days.

Do not make more than one application before rotating to a product of a different mode of action group.

Do not make more than two applications per crop per year; do not exceed 27.4 fl oz per crop per year.

Do not combine in tank with carbamates, organophosphates, pyrethroids, insect growth regulators or plant growth regulators.

Do not apply to vegetable transplants.

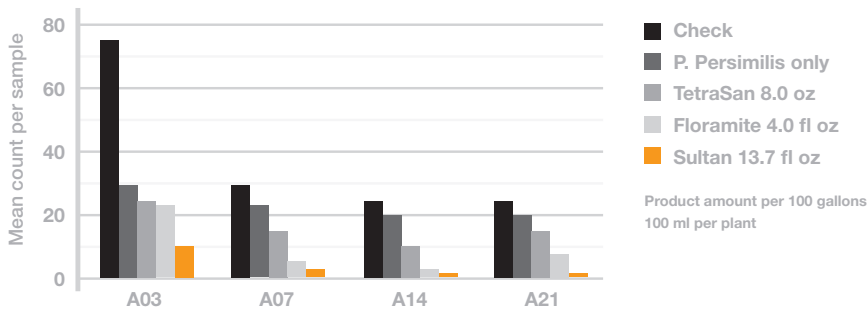
Do not apply to plants exhibiting symptoms of stress or injury, such as stunting, wilting, leaf burn or drop, or abnormal growth.

# Sultan®

miticide

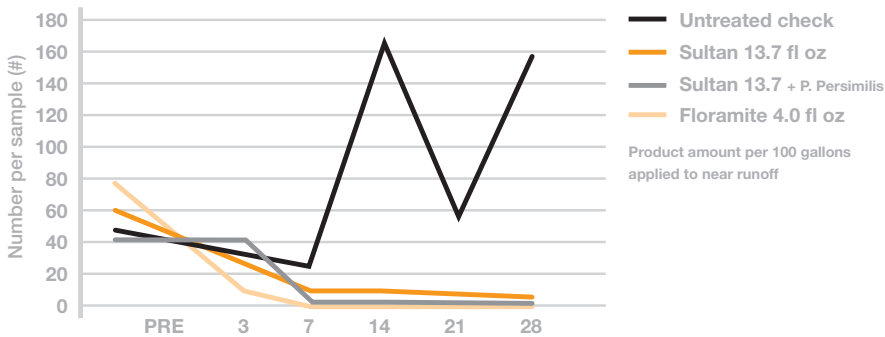
## Efficacy on All Life Stages:

### Sultan Miticide on Greenhouse Gerbera *Tetranychus urticae* efficacy on motiles



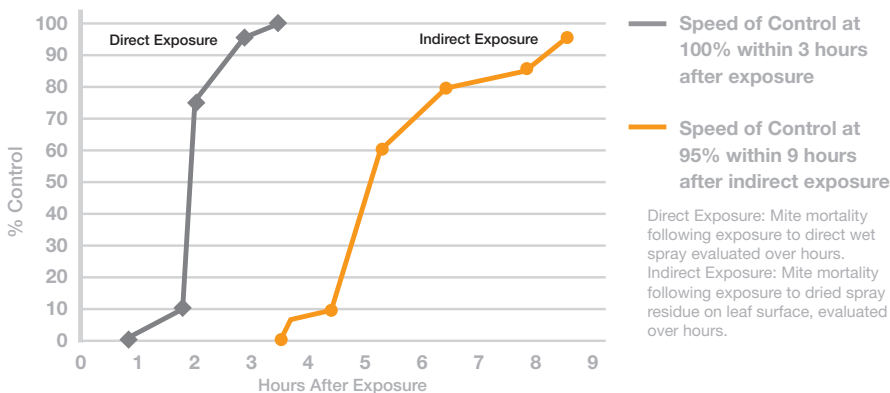
J. Bethke, University of California, 2012

### Sultan Miticide on New Guinea Impatiens *Tetranychus urticae* efficacy on eggs



L. Canas, Ohio State University, 2011

### Cyflumetofen Speed of Control Twospotted spider mites



BASF Lab Study, 2011



#### Use Sites:

Production ornamentals in greenhouses, lathhouses, container and field nurseries, landscapes, and interiorscapes

#### Formulation:

1.67 lb per gal  
SC (suspension concentrate)

#### Packaging:

4 x 1 pints per case

#### Active Ingredient:

Cyflumetofen

#### Chemical Family:

Benzoylacetoneitrile, IRAC Group 25

#### Mode of Action:

This contact miticide inhibits electron transport stopping mitochondrial respiration in complex II of the mitochondria (METI II); this activity blocks energy metabolism and kills targeted mites.

#### Application Rates:

13.7 fl oz /100 gal with two applications of Sultan miticide per crop per year

#### Signal Word:

Caution

#### REI:

12 hours

#### PPE:

Long-sleeved shirt and long pants; chemical-resistant gloves of waterproof material; shoes plus socks